

CHAPTER 8. OTHERS

[1] Service Tools

1. List

NO.	PARTS CODE	DESCRIPTION	Q'TY	PRICE RANK
1	CPWBS3073SC51	Extension board unit, cables and etc.	1	

CONTROL EXTENSION BOARD

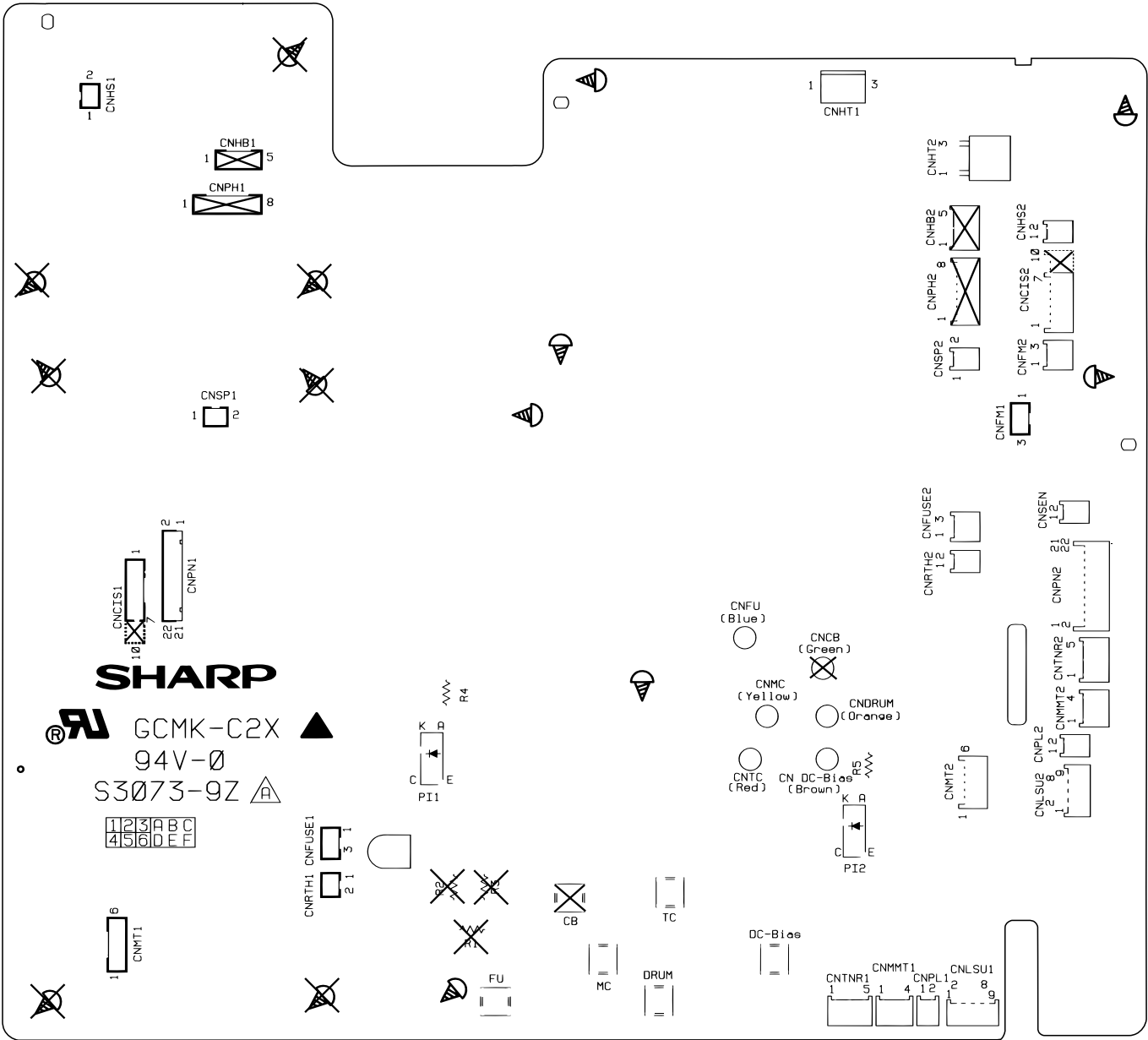


Fig. 1

2. Description

2-1. Extension board unit

- 1) Remove the TEL/LIU PWB, Control PWB and Bottom board unit (Printer and Power supply PWB) from this unit, and mount the extension board unit instead.
 - Before connecting the wiring to the extension board unit, set the test PWB switches to the fixed position.
- 2) The setting is as follows.

Extension board connection diagram

• Caution!

- 1) In the base machine (Printer PWB), take care that the cam may not nip the cable. Be also careful of sensor levers of PIN and POUT.
- 2) SW101 of the Power supply PWB is the interlock switch. When opening and closing the printer unit cover, manually switch ON/OFF.
When opening cover: OFF (No operation required) (+24 V OFF)
When closing cover: ON (Press the switch button) (+24 V ON)
- 3) Connect all cables.
- 4) High-pressure voltage is applied to all of FU-G, DRUM, MC, TC, and DC-Bias on the Printer PWB; Avoid contacting them with other components.
- 5) Into the connector, insert QCNW-334ASCZZ with its contact surface facing downward.
- 6) Be sure to connect the safety ground (AC cord) with the plate metal.

The recording paper sensor(Pin and Pout) are operated by OR of the mechanical unit switch and the test PWB switch. When performing installation in the machine unit, set the test PWB switches to the fixed position.

	Mechanical unit	PWB to be tested
Actual operation with mechanical unit		
Recording paper sensor(Pin/Pout)	ON/OFF operation	OFF(Photo interrupter is interrupted.)
PWB sensor check		
Recording paper sensor(Pin/Pout)	OFF	ON/OFF operation

* Recording paper: ON
No recording paper: OFF

Ref No.	Cable parts code	Description
CNPN2	QCNW – 321ASCZZ	EX. Cable, 22-22 PIN
CNCIS2	QCNW – 322ASCZZ	EX. Cable, 7-7 PIN
CNMT2	QCNW – 324ASCZZ	EX. Cable, 6-6 PIN
CNSP2	QCNW – 325ASCZZ	EX. Cable, 2-2 PIN
CNFUSE2	QCNW – 326ASCZZ	EX. Cable, 3-3 PIN
CNHT2	QCNW – 327ASCZZ	EX. Cable, 3-3 PIN
CNLSU2	QCNW – 334ASCZZ	EX. Cable, 9-9 PIN
CNSEN	QCNW – 335ASCZZ	EX. Cable, 2-2 PIN
CNMMT2	QCNW – 336ASCZZ	EX. Cable, 4-4 PIN
CNTNR2	QCNW – 337ASCZZ	EX. Cable, 5-5 PIN
CNPL2	QCNW – 338ASCZZ	EX. Cable, 2-2 PIN
CNFM2	QCNW – 339ASCZZ	EX. Cable, 3-3 PIN
CNRTH2	QCNW – 340ASCZZ	EX. Cable, 2-2 PIN
CNHS2	QCNW – 341ASCZZ	EX. Cable, 2-2 PIN
CN FU	QCNW – 328ASCZZ	EX. Cable, 1-1 PIN, BLUE
CN MC	QCNW – 330ASCZZ	EX. Cable, 1-1 PIN,YELLOW
CN DRUM	QCNW – 331ASCZZ	EX. Cable, 1-1 PIN,ORANGE
CN TC	QCNW – 332ASCZZ	EX. Cable, 1-1 PIN,RED
CN Dc-Bias	QCNW – 333ASCZZ	EX. Cable, 1-1 PIN,BROWN

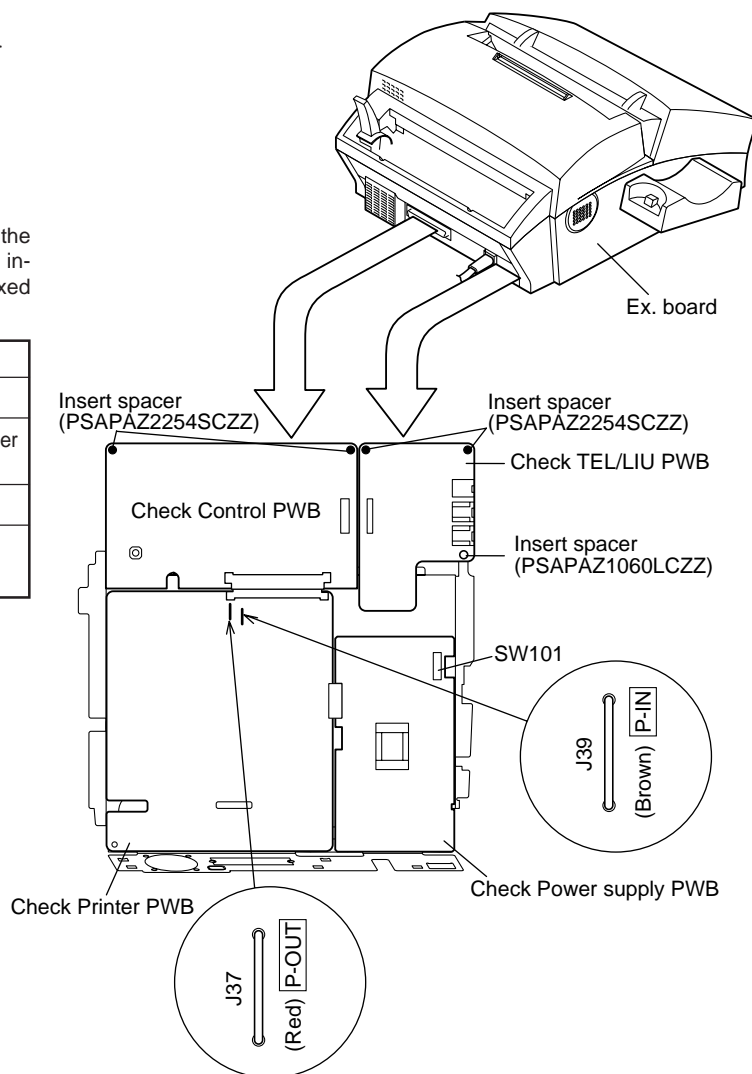


Fig. 2

NO.	PARTS CODE	DESCRIPTION	REF NO.	Q'TY	PRICE RANK
1	QCNCM0672FCZZ	CONNECTOR 3pin	CNHT1	1	AB
2	QCNCM2401SC0B	CONNECTOR 2pin	CNSP1	1	AA
3	QCNCM2401SC0C	CONNECTOR 3pin	CNFM1	1	AB
4	QCNCM2442SC0B	CONNECTOR 2pin	CNHS1	1	AB
5	QCNCM2447SC0B	CONNECTOR 2pin	CNHS2	1	AA
6	QCNCM2473SC0B	CONNECTOR 2pin	CNSP2	1	AA
7	QCNCM2473SC0C	CONNECTOR 3pin	CNFM2	1	
8	QCNCM2482SC2B	CONNECTOR 22pin	CNPN1	1	AE
9	QCNCM2483SC2B	CONNECTOR 22pin	CNPN2	1	AF
10	QCNCM2609SC0B	CONNECTOR 2pin	CNHT2	1	
11	QCNCM7014SC0B	CONNECTOR 2pin	CNRTH1	1	AD
12	QCNCM7014SC0C	CONNECTOR 3pin	CNFUSE1	1	AA
13	QCNCM7014SC0F	CONNECTOR 6pin	CNMT1	1	AB
14	QCNCM7014FC0G	CONNECTOR 10pin	CNCIS1	1	
15	QCNCM7022SC0B	CONNECTOR 2pin	CNRTH2	1	AB
16	QCNCM7022SC0C	CONNECTOR 3pin	CNFUSE2	1	AB
17	QCNCM7022SC0D	CONNECTOR 4pin	CNMMT1, CNMMT2	2	
18	QCNCM7022SC0E	CONNECTOR 5pin	CNTNR1, CNTNR2	2	AB
19	QCNCM7022SC0F	CONNECTOR 6pin	CNMT2	1	AB
20	QCNCM7022SC0G	CONNECTOR 10pin	CNCIS2	1	
21	QCNCM704BAF04	CONNECTOR 2pin	CNSEN	1	
22	QCNCM704BAF06	CONNECTOR 2pin	CNPL1, CNPL2	2	AC
23	QCNCW0053GCZZ	CONNECTOR 9pin	CNLSU1, CNLSU2	2	AD
24	QCNW-328ASCZZ	FU-G CABLE, BLUE 1-1pin	CNFU	1	
25	QCNW-330ASCZZ	MC CABLE, YELLOW 1-1pin	CNMC	1	
26	QCNW-331ASCZZ	DRUM CABLE, ORANGE 1-1pin	CNDRUM	1	
27	QCNW-332ASCZZ	TC CABLE, RED 1-1pin	CNTC	1	
28	QCNW-333ASCZZ	DC-BIAS CABLE, BROWN 1-1pin	CNDC-BIAS	1	
29	QTANN2046SCZZ	TERMINAL	FU, MC, DRUM, TC, DC-BIAS	5	AC
30	VHPSG206S/-1	PHOTO TRANSISTOR	PI1, PI2	2	AG
31	VRD-HT2EY221J	RESISTOR (1/4W 220Ω ±5%)	R4, R5	2	AA
32	GLEGG2075SCZZ	RUBBER LEG		2	
33	LPLTM3083SCZZ	CHASSIS		1	
34	PSPAZ1060LCZZ	SPACER		1	AB
35	PSPAZ2254SCZZ	SPACER		4	AD
36	QCNW-321ASCZZ	PANEL CABLE 22-22pin	CNPN2	1	
37	QCNW-322ASCZZ	CIS CABLE 7-7pin	CNCIS2	1	
38	QCNW-324ASCZZ	MOTOR CABLE 6-6pin	CNMT2	1	
39	QCNW-325ASCZZ	SPEAKER CABLE 2-2pin	CNSP2	1	
40	QCNW-326ASCZZ	FUSE CABLE 3-3pin	CNFUSE2	1	
41	QCNW-327ASCZZ	HEATER CABLE 3-3pin	CNHT2	1	
42	QCNW-334ASCZZ	LSU CABLE 9-9pin	CNLSU2	1	
43	QCNW-335ASCZZ	SENSOR CABLE 2-2pin	CNSEN	1	
44	QCNW-336ASCZZ	MAIN MOTOR CABLE 4-4pin	CNMMT2	1	
45	QCNW-337ASCZZ	TONER CABLE 5-5pin	CNTNR2	1	
46	QCNW-338ASCZZ	SOLENOID CABLE 2-2pin	CNPL2	1	
47	QCNW-339ASCZZ	FAN CABLE 3-3pin	CNFM2	1	
48	QCNW-340ASCZZ	THERMISTER CABLE 2-2pin	CNTH2	1	
49	QCNW-341ASCZZ	HOOK SWITCH CABLE 2-2pin	CNHS2	1	
50	XHBSE30P06000	SCREW (3X6)		7	AA

[2] IC signal name
CONTROL PWB UNIT
IC5:VHISH7041/28A(SH7041)

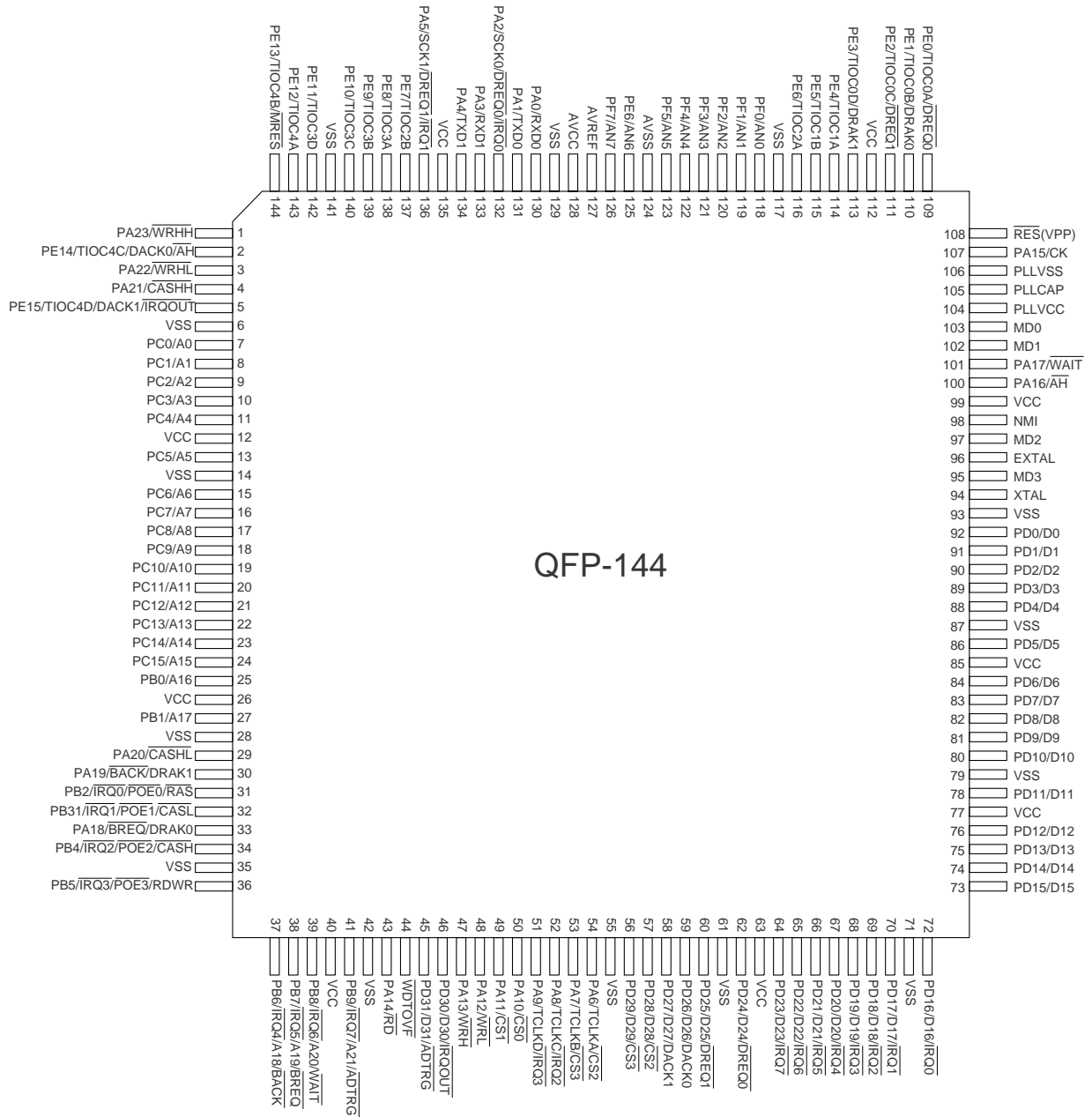


Fig. 3

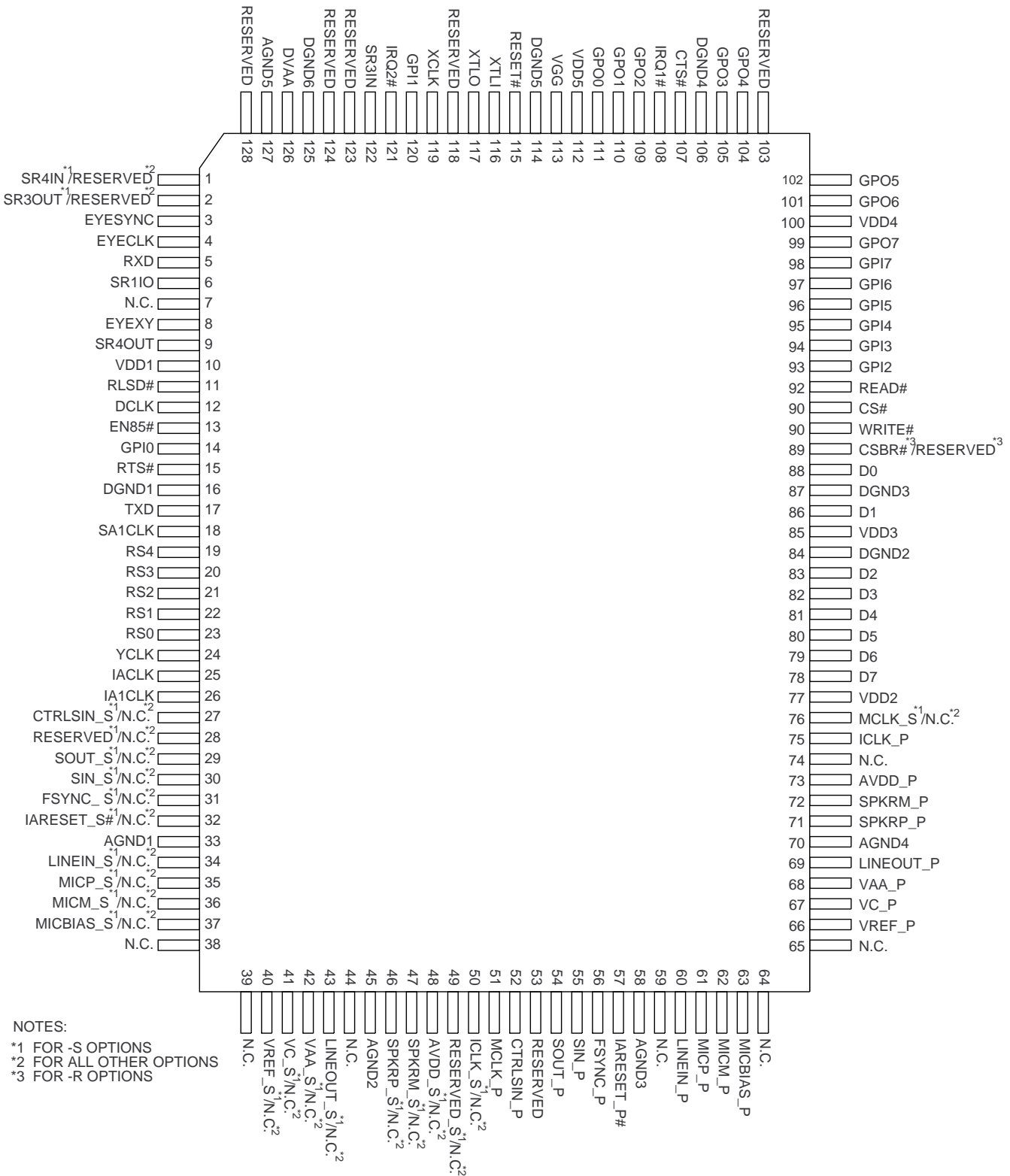


Fig. 4

IC14: VHI27C80090ST(M27C800-901)

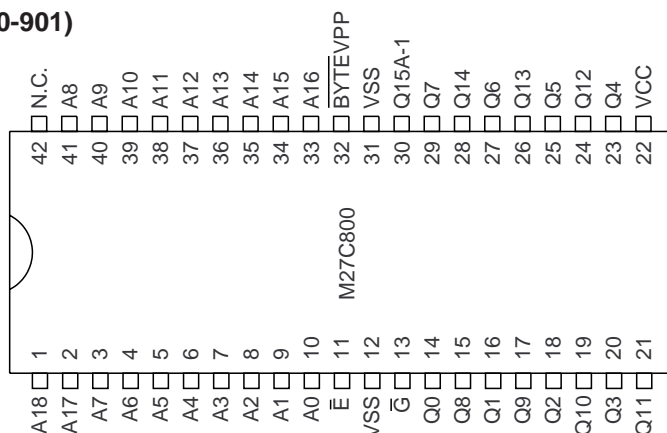


Fig. 5

IC15: VHILR38784/-1(LR38784)

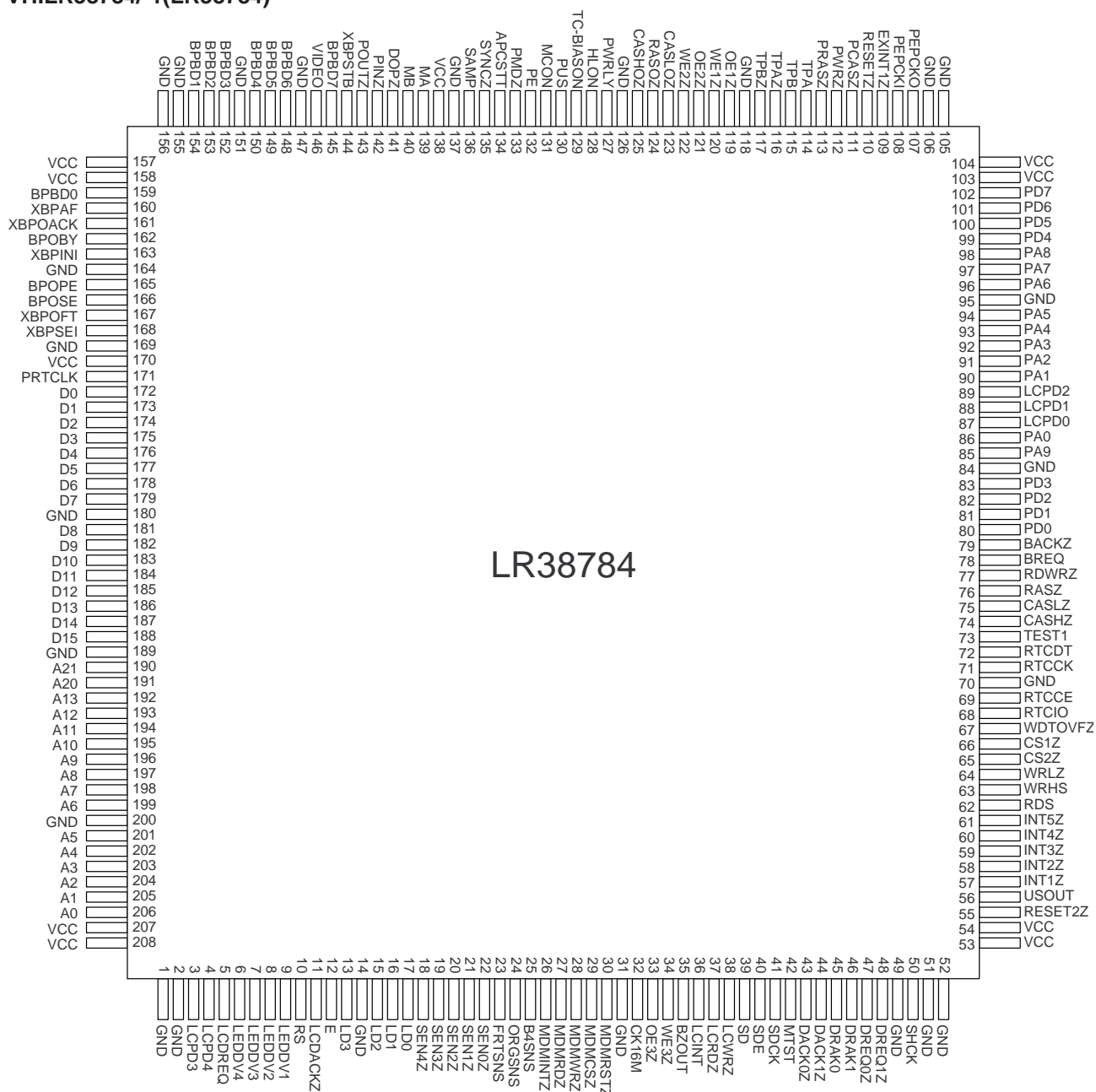
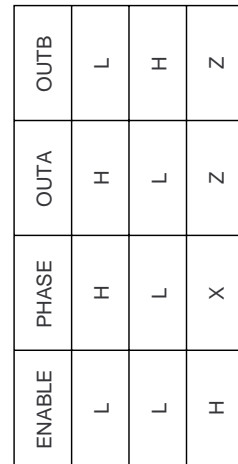


Fig. 6



X = DON'T CARE
Z = HIGH IMPEDANCE

8-7